



The Craylands School Newsletter

Craylands Lane, Swanscombe, Kent DA10 0LP
Telephone: 01322 388230
Email: admin@craylands.kent.sch.uk

Term 1 Week 6

Fri 14th Oct '22

Dear Parents/Carers,

We are at the end of the penultimate week of the first term of the school year—one final push on learning into the last week.

INSET

A reminder that Monday 17th October is an INSET day and the children will not be in school on this day.

Football

Yesterday, the Year 3 and 4 children attended the Dartford District tournament. We must be on something of a winning streak at the moment as they too have made it through to the final stages this morning. The children won their group scoring 16 points overall, winning 5 matches and drawing 1. We are so pleased that our children are shining in sports at the moment, it makes us all very proud! Wishing them all the best for today and I will update you next week.

Drop off zone

A reminder please not to park in the parking bays in the morning when the drop off zone is in action. You should pull alongside the kerb and let children out on kerbside. By parking up, cars are then having to reverse back into oncoming traffic and it is causing further congestion and it is posing more risks. You will be able to drop off much quicker by following this procedure also, which is why many of you use this service. Thank you in advance for your support with this.

Reading mornings

Thank you to all those of you who have attended a reading morning with your children this week; we hope that you enjoyed this dedicated time to read with your child. Reading is such an important part of your child's education and it is vital that they read regularly; whether this be their school reading book, comics, non-fiction books—whatever they are interested in, we should encourage them to read.

Reading opens up our children's world even more—they gain knowledge from reading, widen their vocabulary and they have fun! Those who read more become better writers as they have a better understanding of the grammatical structures and how to write for an audience. Those who read more, are more likely to be able to understand word problems in maths lessons, demonstrating their reasoning and problem solving skills. Those who read more can take part more confidently in our STAR topics, showing that they understand the historical, geographical or scientific subjects being learnt.

As part of your child's weekly home learning, we ask that they read regularly—preferable every day. We understand that this may not be possible for all and we would just encourage you to read at any opportunity.

TTRS

A big thank you to all those children who have started to log on more now on TTRS each week. We have noticed that some children are simply logging on for a few seconds and so a change in the 5 minutes extra play recognition will be made so that we are only rewarding those who have played for at least 5 minutes on times tables rockstars each week.

Important dates

| | |
|-------|---|
| 17/10 | INSET DAY |
| 21/10 | Diwali celebrations in school |
| 21/10 | End of term 1 |
| 31/10 | Start of term 2 |
| 1/11 | 6p.m.—year 1 phonics workshop |
| 2/11 | 9 a.m.—year 1 phonics workshop |
| 8/11 | 6p.m. EYFS phonics workshop |
| 9/11 | 9a.m. EYFS phonics workshop |
| 9/11 | Parents evening |
| 7/12 | KS1 nativity a.m. (timings tbc) EYFS nativity p.m. (timings tbc) |
| 8/12 | EYFS nativity a.m. (timings tbc) KS1 nativity p.m. (timings tbc) |
| 16/12 | End of term 2 |

Friends of Craylands

Bargain recycled school uniform can be bought at:

<https://www.tickettailor.com/events/friendsofthecraylandschool/324552/>

Or from new:

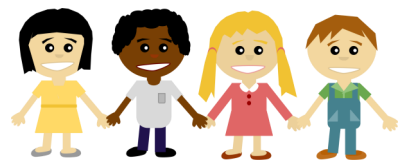
<http://www.uniform-direct.com>

Harvest

Thank you to all those who have sent in food items; we will be holding our harvest assembly on Tuesday morning.

Wishing you all an enjoyable weekend and we shall see you all on Tuesday next week—Mr Hiscock

EYFS NEWS



The children have had their first walk up at the meadow this week in lovely warm sunshine.

We are so lucky to have this amazing space where the children can tune into their senses, explore and learn. The number focus has been repeating patterns and this is also their home learning task. Please remember to practise letter sounds and formation at home too.

Have a lovely long weekend.

Arts and cultural challenges



This year, Mr Hiscock wants to fill up a wall in his office with your art challenges.

Complete the challenge and then send it in to Mr Hiscock.

| Date | Activity idea |
|---------------------------|---|
| THIS WEEK'S ART CHALLENGE | Black History Month Inspired Graphic Art https://youtu.be/mBGmRXp2u1A |
| LAST WEEK'S ART CHALLENGE | Dylan (Y2) Hunter (Y2) |



Online reading books...

<https://youtu.be/c-vi0ZmqBhQ>

<https://youtu.be/H6Iw3gmX39Y>

<https://youtu.be/cng5mdBv3WM>

<https://youtu.be/9IhhCq44ar8>

Throughout October, we will be celebrating Black History Month at Craylands.

Please find some links below to videos you may wish to use to continue the important discussions related to Black History.

EYFS/KSI

[Celebrating Black History Month on CBeebies - CBeebies - BBC](#)

[CBeebies | Let's talk about Black History - YouTube](#)

[Song celebrating black history](#)

[Coming to England by Floella Benjamin](#)

[Celebrating Famous Black British people](#)

[Mae Jemison video](#)

[Mae among the stars](#)

KS2

[Windrush generation—What is the Windrush Generation? - CBBC Newsround](#)

[Black British Stories - BBC Teach](#)

[Rosa Parks - BBC Teach](#)

[Harriet Tubman - BBC Teach](#)

[KS2: Pablo Fanque - The greatest Victorian showman - BBC Teach](#)

[School Learning Zone - Black History Month \(school-learningzone.co.uk\)](#)

[BBC iPlayer - Horrible Histories - Top 5: Black History Month with Oti Mabuse](#)

[Black Britons who changed the world](#)

[Black women you should know about](#)

[Black men who made history in Britain](#)

[Inspirational Black Women](#)

Admission to

Secondary school in Kent 2023

Apply online at
kent.gov.uk/secondaryadmissions

**Opens Thursday 1 September 2022 and closes
at midnight on Monday 31 October 2022**

For children born between
1 September 2011
and **31 August 2012**,
Transferring to Secondary
school in **September 2023**

What to do

Choose a school

It's important to find out more about the schools you are interested in before you decide to name them on the application form.

Read the Guide to Secondary admissions at www.kent.gov.uk/secondaryadmissions.

You can name up to four Secondary schools, inside or outside of Kent, but you must name them all on the same application.

Apply for a school place

A simple, fast, convenient process which opens **Thursday 1 September 2022** and closes at midnight on **Monday 31 October 2022**.

If you already have an account set up from the Kent Test process, please use these login details.

You will receive an email confirmation that your application has been submitted correctly and that the LA has received it.

You can log back in at any time to view the information submitted.

Receiving your offer

On offer day (**Wednesday 1 March 2023**) an email will be sent after **4pm** informing you of your offer.

You must accept or decline the school place you have been offered by **Wednesday 15 March 2023**.

If we have not offered your child a place in your preferred school, you have the right to appeal. You can also add their name to the school's waiting list if your child is eligible for admission.

Moving house during the application window will likely complicate your application and we therefore advise you to pay special attention to key dates in the admissions process. KCC has no discretionary authority to vary the process for parents who cannot complete address moves in time to make use of them for admissions purposes. If you have queries relating to this, please email the team on one of the email addresses below.

Key dates

| | |
|----------------------------------|--|
| Thursday 1 September 2022 | Online application process opens. Go to www.kent.gov.uk/secondaryadmissions to register and apply. |
| Monday 31 October 2022 | Online application process closes for the main round. Any amendments after this date must be emailed to kentonlineadmissions@kent.gov.uk |
| Wednesday 1 March 2023 | Offers of school places sent to parents via email after 4pm . |
| Wednesday 15 March 2023 | Parents should contact the school to accept/refuse the place that has been offered and can use the link in the offer email to ask for their child to be added to the waiting list of eligible schools named on the original application. |
| Tuesday 28 March 2023 | Appeals need to be lodged by this date to be heard before September – appeals information can be found at www.kent.gov.uk/schoolappeals . You can only appeal for schools that were named on the application form. |

Need help?

Email kent.admissions@kent.gov.uk or kentonlineadmissions@kent.gov.uk

Full information booklet can also be viewed online at kent.gov.uk/secondaryadmissions

Only one application per pupil will be accepted. If you apply online, do not complete any other form of application. Keep your login details safe and use your registered email address for all communication with the team.

The confirmation email may go to your junk/spam folder of your email – please check here before contacting our team for confirmation.

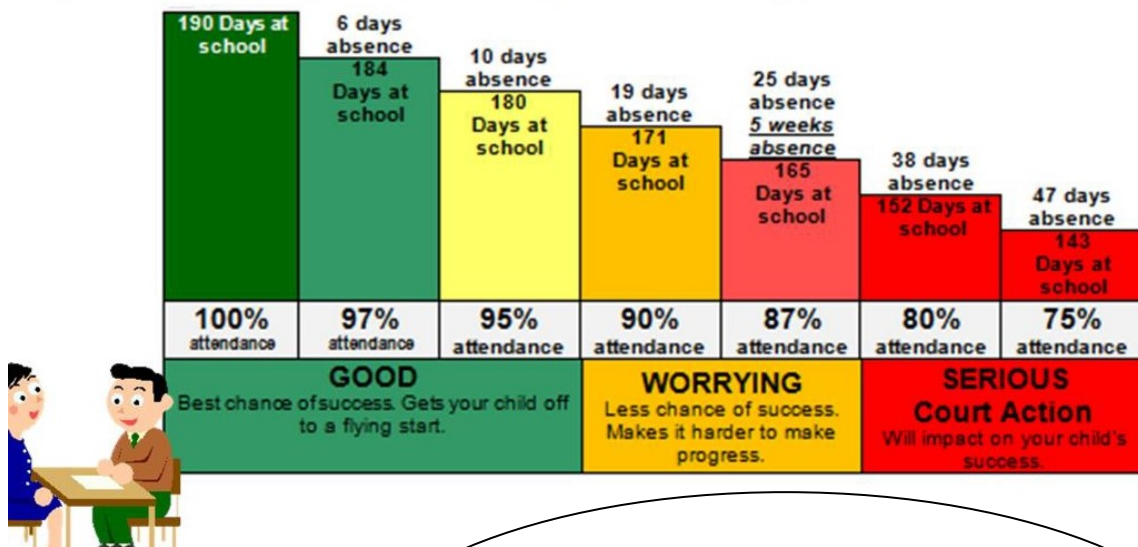


Dates for your diary

New dates have been added/confirmed!

| | |
|-----------|--|
| 17/10 | INSET DAY |
| 21/10 | Diwali celebrations in school |
| 1/11 | 6p.m.—year 1 phonics workshop |
| 2/11 | 9 a.m.—year 1 phonics workshop |
| 8/11 | 6p.m. EYFS phonics workshop |
| 9/11 | 9a.m. EYFS phonics workshop |
| 9/11 | Parents evening for KS1 & KS2 3p.m.—8p.m. |
| 10/11 | Anti-bullying workshop—parent and child KS1 9 a.m. & 6p.m. (dependent on number of participants) for all KS1 |
| 17/11 | Anti-bullying workshop—parent and child KS2 9 a.m (years 3 & 4) 10 a.m. (years 5 & 6) & 6p.m. (dependent on number of participants) for all |
| 28/11 | Year 2 reading morning 8.35a.m.—9a.m. |
| 29/11 | Years 3 & 4 reading morning 8.35a.m.—9a.m. |
| 30/11 | Years 5 & 6 reading morning 8.35a.m.—9a.m. |
| 1/12 | Year 1 reading morning 8.35a.m.—9a.m |
| 7/12 | KS1 nativity a.m. (timings tbc) EYFS nativity p.m. . (timings tbc) |
| 8/12 | EYFS nativity a.m. . (timings tbc) KS1 nativity p.m. . (timings tbc) |
| 9/12 | Hannukah celebrations in school |
| 23/4—27/4 | Year 4 Residential |
| 30/6 | Sports day (KS2 a.m. / KS1 & EYFS p.m.) |
| 7/7 | Reserve sports day |
| 5/7 & 6/7 | Year 6 production (evening) |
| 10/7—14/7 | Year 6 residential |

Attendance



To be a Craylearner, you need to be in school every day!
100% is what I really want to see!
Less than 96% means you will struggle to be a Craylearner!

| Class | Attendance this week | No of children off this week |
|------------|----------------------|------------------------------|
| Elmer | 94.4% | 5 |
| Funnybones | 96.3% | 4 |
| Gruffalo | 96.5% | 3 |
| Stickman | 96.5% | 4 |
| Dahl | 93.0% | 5 |
| Wilson | 98.6% | 2 |
| Simon | 98.0% | 3 |
| Walliams | 97.8% | 2 |
| Fine | 95.9% | 5 |
| Horowitz | 93.3% | 4 |
| Morpurgo | 96.3% | 3 |
| Ralf | 97.3% | 5 |

WELL DONE TO.....Wilson Class for having the highest attendance this week!



What have the Craylearners been learning about this week?
Ask your child to show you their learning from this week at home.
Click on the links for extra home learning.

| Year group | Maths | Spag |
|--------------------|---|---|
| Elmer / Funnybones | Parts and wholes to 10 Y1 Autumn Block 2 TS2 Part-whole model on Vimeo | |
| Gruffalo/ Stickman | Subtracting across a 10 Y2 Autumn Block 2 TS10 Subtract across 10 on Vimeo | |
| Dahl/Wilson | Adding across 10s and 100s Y3 Autumn Block 2 TS6 Add 1s across a 10 on Vimeo | Fronted adverbials What is a fronted adverbial? - BBC Bitesize |
| Walliams/Simon | Adding 4 digit numbers Y4 Autumn Block 2 TS3 Add two 4digit numbers one exchange on Vimeo | Adverbials of possibility Adverbs of Possibility.pdf (sch.life) |
| Horowitz/Fine | Rounding to check answers Y5 Autumn Block 1 TS12 Round to the nearest 10 100 1000 on Vimeo | Relative clauses What are relative clauses? - BBC Bitesize |
| Morpurgo/Rauf | Assessments | Contractions How to use apostrophes in contractions - BBC Bitesize |



What is your child learning about in STAR this term?

| | |
|--------|--|
| Year 2 | How do we know about the Great Fire of London? |
| Year 3 | What happens from the start to the end |
| Year 4 | What is it like in North America? |
| Year 5 | What happened in Britain after the Ro- |
| Year 6 | Does deforestation effect us? |

BATTLE OF THE BANDS

| Last weeks results... | This week's battles..... |
|--|---|
| <p>Stickman vs Gruffalo</p> <p>996 5659</p> <p>Gruffalo wins</p> <p>Dahl vs Wilson</p> <p>4651 6436</p> <p>Wilson wins!</p> <p>Walliams vs Simon</p> <p>9,125 19,959</p> <p>Simon wins!</p> <p>Horowitz vs Fine</p> <p>81,025 41,232</p> <p>Horowitz wins!</p> <p>Morpurgo vs Rauf</p> <p>7852 18,479</p> <p>Rauf wins!</p> | <p>Year 2 vs Year 3</p> <p>Winning year group gets extra pl ay</p> <p>Year 4 vs Year 5 vs Year 6</p> <p>Winning year group gets extra pl ay</p> |

| | | | | | | |
|---|---|--|---|---|--|--|
| | | Funnybones Top 3 players on Numbots Correct answers Khalid Jessica Lenny | Elmer Top 3 players on Numbots Correct answers Taylor Jai Ethan | <u>Stickman</u> Hayden Nate Aryan | <u>Gruffalo</u> Bertie Arlind Hunter | <u>Dahl</u> Evie Angela Olivia |
| <u>Wilson</u> Chika Alexander Harry P | <u>Simon</u> Harry P Harrison Chidera | <u>Walliams</u> Harmony Helena Alfie T | <u>Horowitz</u> Eva P Reggie Emilie S | <u>Fine</u> Gemma Rosey Euan | <u>Morpurgo</u> Harry Habib Kaisen | <u>Rauf</u> Faren Saphyra Selina |

Lenny's letter

Each week, this newsletter will celebrate all those at The Craylands School who received a Craylearner certificate, R.O.A.R. certificate, HERO bear and the winning team.

Our pupils really are champions at Craylands!



| | | | |
|--------------|-------------|----------|--------|
| Hungry C | Sonny | Wilson | Oliver |
| Rainbow Fish | Conor | Walliams | Jack |
| Elmer | Sienna | Simon | Ishaan |
| Funnybones | Obie | Horowitz | Macen |
| Gruffalo | Avaya | Fine | Poppy |
| Stickman | Elizabeth K | Morpurgo | Albert |
| Dahl | Rowan | Rauf | Alfie |

The R.O.A.R. certificates were issued to.....

| | | | |
|--------------|----------|----------|---------|
| Hungry C | Bonnie | Wilson | Henry |
| Rainbow Fish | Archie | Walliams | Frankie |
| Elmer | Riley | Simon | Libby |
| Funnybones | Liza-Mai | Fine | Grace |
| Gruffalo | Shea | Horowitz | Eva J |
| Stickman | Vinnie | Morpurgo | Toby |
| Dahl | Jude | Rauf | Laurie |



This week's HERO (Here Every day Ready On time) Attendance Bear is awarded to ...

Wilson Class



Achievements outside of school...

A big well done to Aran S (Wilson Class) who helped give out free vegetarian food and water to the needy and commuters in Gravesend this week.