



# The Craylands School Newsletter

Craylands Lane, Swanscombe, Kent DA10 0LP  
Telephone: 01322 388230  
Email: admin@craylands.kent.sch.uk  
Attendance@craylands.kent.sch.uk

Term 5 Week 1

Fri 25 April '25

Dear Parents/ Carers,

Welcome back to term 5...the start of the Summer term!

## School Meals

This week, we introduced payments for school dinners using School Gateway. Overall, the transition seems to have run smoothly. However, there are already a number of families who have not paid for their child's school meals. Whereas with Pinnacle, you may have got into a habit of paying a lump sum at a certain time each month, we would request that now you pay at the start of each week for the meals that your child will be having for the week ahead. Think of it as a restaurant meal—you would not have the meal and then not pay for it.

We have developed a no debt policy and within this, if the debt reaches a certain point, your child will only be served a jacket potato and we may ask that you provide your child with a packed lunch if you do not pay your debts.

Any money not paid for meals now directly impacts on the school as we are now paying directly to Pinnacle, so please do help to ensure that the school does not become in debt as payments are not being made on time.

## PE timetable

The PE timetable is as below:

Monday: Stickman / Simon (Hall)

Tuesday: Elmer

Wednesday: Wilson / Walliams (Hall) / Funnybones

Thursday: Fine / Rauf / Gruffalo

Friday: Horowitz / Morpurgo / Dahl (Hall)

A reminder that children should wear appropriate PE kit and should not be wearing labelled and/or patterned clothing—it should be plain jogging bottoms/shorts, a coloured top (the same as their team) and they should wear their school jumper rather than a PE top. We are seeing lots of branded tracksuits that are NOT part of the uniform so please do not send your child in wearing them. Many thanks.

## Bracelets

We are seeing lots of children wearing bracelets in schools—please can we ask that these are not worn as they are not part of school uniform.

## Quiz night

The Friends of Craylands are very excited to announce the return of our Quiz Night on Friday 2nd May 2025! Doors open at 6:30pm and the quiz starts at 7pm. This is an adult only event and teams have a maximum of 8 members, but you can still join in with fewer people.

Tickets cost £6 and that includes an entry into a prize draw! You can also pre-order a chip shop dinner (veggie option available) to enjoy on the night. This is a 'bring your own' event so you can bring along any snacks/drinks (including alcohol) for your team. We will also have a raffle on the night with some lovely prize hampers!

Wishing you all an enjoyable weekend— Mr Hiscock

## Important dates

|            |   |
|------------|---|
| 27-30/4    | Y4 residential  |
| 2/5        | Friends of Craylands quiz night                                 |
| 5/5        | BANK HOLIDAY  |
| 7/5        | Wellbeing session after school                                  |
| 8/5        | VE day celebrations—wear red, white and blue colours            |
| 12th-15 /5 | YEAR 6 SATS take place (ALL Y6 MUST BE IN SCHOOL ON THESE DAYS) |
| 16th May   | Friends of Craylands disco                                      |
| 20/5       | 3.30pm Meeting for Y5 parents re 11+                            |
| 23/5       | End of term 5   |
| 2/6        | Term 6 begins   |
| 6/6        | Sports day<br>KS2 A.M.<br>EYFS/ KS1 P.M.                        |
| 13/6       | Reserve sports day  |
| 7/7-11/7   | Year 6 Isle of Wight residential                                |

## After School Clubs

Club letters will be sent out today. Please choose your child's club preferences BY Sunday 27th at midday. Places will be allocated Sunday afternoon by computer. Go to: <https://craylands.parents.eveningsystem.co.uk/>

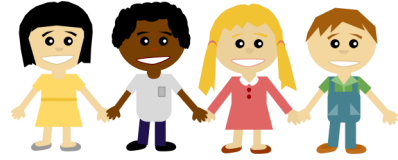
## Y4 residential

Wishing all of the children attending the Y4 residential a fantastic time away.

Please ensure that they have been to the toilet before arriving on Sunday as the school will not be open.

Ensure they have water bottle, sun cream and sun hat as weather is meant to be nice.

# EYFS NEWS



Welcome back ! We do believe all of the children have grown this holiday and are looking bright and healthy ready for the Summer Term.

Our topic is now called 'How many Legs?' and is a very popular one with the children as we spend the term exploring mini-beasts and researching facts about them.

We are currently excited about the baby caterpillars that have arrived in class and are busy munching their food and wriggling around for the children to observe up close.

Number focus is on teen numbers and ensuring that children are counting forwards and backwards correctly and securing their number bonds within 10 amongst other skills.

Little Wandle phonics continues daily; practising blending with increased fluency is our shared goal.

The children enjoyed their first formal P.E lessons this week and looked great in their kits.

A reminder that Hungry Caterpillar's P.E day is on a Wednesday and Rainbow Fish is on a Thursday. Children should be wearing a plain coloured T-shirt in their house colour as part of their kit.

Thank you for sending in home learning, we will keep them in this week to give us more time to share them with the children.

We look forward to the new term ahead.

Parent and Child Number Workshop -  
Thursday 1st May 9am



## Lenny's Den News

Our first week of the summer term has focussed on feelings. The children are amazing at matching the colour zones to the emotions happy, sad and angry. Our topic box was 'If you're happy and you know it' along with sensory feelings bottles and faces to match. We have enjoyed lots of play, taking turns and interaction this week as they settle back into the school routine. Bucket time was colour changing bottles to match the zones of regulation and the children took turns printing balloons to make faces and drew on the features for the different emotions, they did fantastically with this! Lovely to see some sunshine, we have taken the opportunity for lots of outside play, the children have especially loved our new seesaw and sandpit.

Lovely start to the term! Well done Lenny's Den!

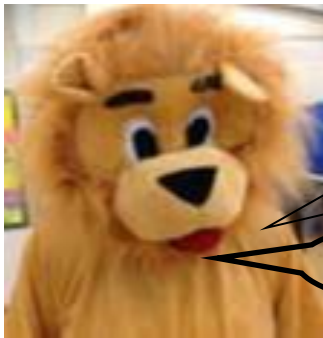
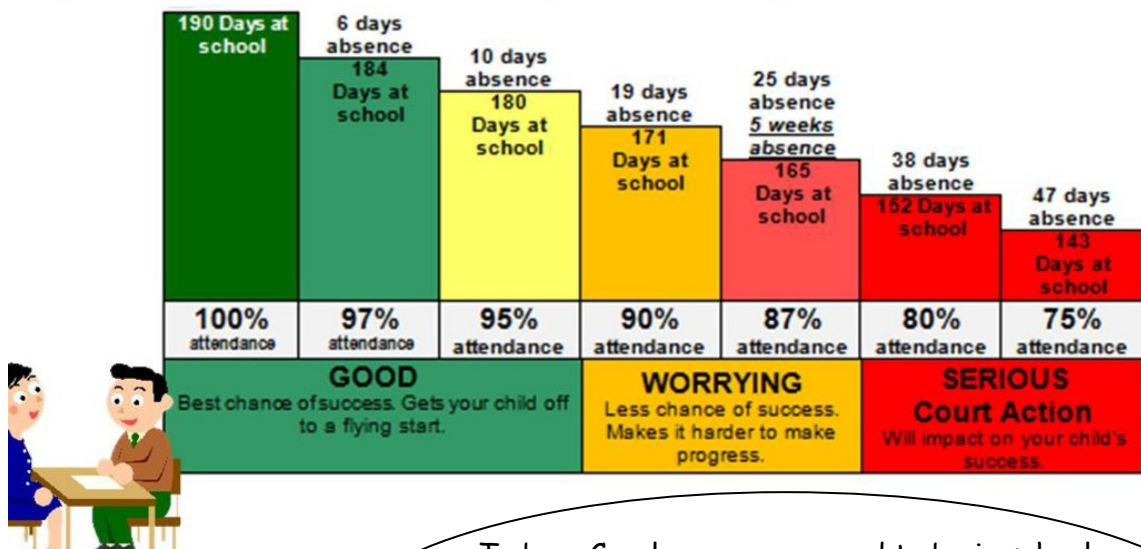
# Dates for your diary

We would very much like to try to improve on how much notice we give you for events this year. Whilst this will not always be possible, I can share with you the following dates. Please be advised that some events may need to change depending on circumstances.

There will be other events which we will let you know as far in advance as possible when they have been finalised.

|           | <b><u>TERM 5 DATES</u></b>   |
|-----------|--|
| 27/4      | Year 4 residential leaves  |
| 30/4      | Year 4 residential returns   |
| 7/5       | WELL BEING SESSION—YEARS 1– 6 INVITED TO STAY IN SCHOOL FOR A FUN SESSION. Book on the Parents Evening app under Events. <a href="https://craylands.parentseveningsystem.co.uk/">https://craylands.parentseveningsystem.co.uk/</a> |
| 8/5       | VE day celebrations—children to wear red, white and blue to school   |
| 12/5–15/5 | KS2 SATS   |
| 16/5      | Friends of Craylands Disco   |
| 20/5      | Meeting for Y5 parents re 11+ in school  |
| 23/5      | End of term  |
|           | <b><u>TERM 6 DATES</u></b>   |
| 2/6       | Times Tables check starts for Y4   |
| 4/6       | Class Photos   |
| 6/6       | Sports day   |
| 9/6–13/6  | Year 1 phonics screening check   |
| 13/6      | Reserve sports day   |
| 5/3       | WELL BEING SESSION—YEARS 1– 6 INVITED TO STAY IN SCHOOL FOR A FUN SESSION  |
| 16/6      | Elmer reading morning 830 -855- Mobile 1   |
| 17/6      | Funnybones reading morning 830–855—mobile 1  |
| 18/6      | Gruffalo reading morning 830–855—mobile 1  |
| 18/6      | WELL BEING SESSION—YEARS 1– 6 INVITED TO STAY IN SCHOOL FOR A FUN SESSION  |
| 19/6      | Stickman reading morning 830–855—mobile 1  |

# Attendance



To be a Craylearner, you need to be in school every day!  
100% is what I really want to see!  
Less than 96% means you will struggle to be a Craylearner!

AT 8.48 WE CLOSE THE GATE - AFTER THAT YOU ARE LATE!

| Class      | Attendance this week | No of children off this week |
|------------|----------------------|------------------------------|
| Elmer      | 97.5%                | 3                            |
| Funnybones | 93.3%                | 4                            |
| Gruffalo   | 93.9%                | 5                            |
| Stickman   | 95.4%                | 3                            |
| Dahl       | 93.1%                | 3                            |
| Wilson     | 100%                 | 0                            |
| Simon      | 98.7%                | 2                            |
| Walliams   | 93.7%                | 6                            |
| Fine       | 96.1%                | 5                            |
| Horowitz   | 93.9%                | 4                            |
| Morpurgo   | 95.7%                | 3                            |
| Ralph      | 87.0%                | 10                           |

WELL DONE TO.....Wilson Class for having perfect attendance this week!

# Times Tables Rockstars



*Last weeks results...*

*This week's battles.....*

*Stickman vs  
Gruffalo*

*Dahl vs Wilson*

*Walliams vs Simon*

*Horowitz vs Fine*

*Rauf vs Morpurgo*



What have the Craylearners been learning about this week?  
 Ask your child to show you their learning from this week at home.  
 Click on the links for extra home learning.

| Year group         | Maths   | Spag   |
|--------------------|---|--|
| Elmer / Funnybones |   | Phonics<br><a href="http://littlewandlelettersandsounds.org.uk">For parents   Letters and Sounds (littlewandlelettersandsounds.org.uk)</a> |
| Gruffalo/ Stickman | Equal and unequal parts<br><a href="#">Y2 Summer Block 1 TS2 Equal and unequal parts on Vimeo</a>                     | Phonics<br><a href="http://littlewandlelettersandsounds.org.uk">For parents   Letters and Sounds (littlewandlelettersandsounds.org.uk)</a> |
| Dahl/Wilson        | Mass and capacity<br><a href="#">Y3 Spring Block 4 TS3 Measure mass in kilograms and grams on Vimeo</a>               | Fronted adverbials<br><a href="#">What is a fronted adverbial? - BBC Bitesize</a>  |
| Walliams/Simon     | Tenths on a number line<br><a href="#">Y4 Spring Block 4 TS4 Tenths on a number line on Vimeo</a>                     | Speech<br><a href="#">How to use inverted commas - BBC Bitesize</a>  |
| Horowitz/Fine      | Fraction and decimals equivalents<br><a href="#">Y5 Spring Block 3 TS4 Equivalent fractions and decimals on Vimeo</a> | Fronted adverbials<br><a href="#">What is a fronted adverbial? - BBC Bitesize</a>  |
| Morpurgo/Rauf      | Revision<br><a href="#">KS2 Maths - BBC Bitesize</a>  | Revision<br><a href="#">KS2 English SATs paper - Grammar, Punctuation, Spelling - Year 6 Practice - BBC Bitesize</a>                       |



What is your child learning about in STAR this term?

|        |                         |
|--------|-------------------------|
| Year 2 | Around the world        |
| Year 3 | Ancient Greeks          |
| Year 4 | Ancient Egyptians       |
| Year 5 | Coasts & Europe         |
| Year 6 | Swanscombe now and then |

# Lenny's letter

Each week, this newsletter will celebrate all those at The Craylands School who received a Craylearner certificate, R.O.A.R. certificate, HERO bear and the winning team.

Our pupils really are champions at Craylands!



Hungry C    *Maliha*    Wilson    *Love*  
Rainbow Fish    Kaizer    Walliams    *Eva*  
  
Elmer    *On trip*    Simon    *Teddie*  
  
Funnybones    *On trip*    Horowitz    *Tilly*  
  
Gruffalo    *Sofia*    Fine    *Mae*  
Stickman    *Archie H*    Morpurgo    *Tristan*  
  
Dahl    *Freddie P*    Rauf    *Harrison*

## The R.O.A.R. certificates were issued to.....

|              |                |          |                  |
|--------------|----------------|----------|------------------|
| Hungry C     | <i>Ollie</i>   | Wilson   | <i>Gabriel</i>   |
| Rainbow Fish | <i>Capri</i>   | Walliams | <i>Luca</i>      |
| Elmer        | <i>On trip</i> | Simon    | <i>Iyla</i>      |
| Funnybones   | <i>On trip</i> | Fine     | <i>Isabelle</i>  |
| Gruffalo     | <i>Macey</i>   | Horowitz | <i>Sebastian</i> |
| Stickman     | <i>Ben Z</i>   | Morpurgo | <i>Helena</i>    |
| Dahl         | <i>Lewis</i>   | Rauf     | <i>David</i>     |



This week's HERO (Here Every day Ready On time) Attendance Bear is awarded to ...

**Wilson Class**



## Achievements outside of school...

Louie B in Funnybones was awarded a Gold Medal at the Bushido Judo Competition in Tonbridge before Easter. He won all 4 of his fights! Well done Louie!



**Park Fitness**  
**Active Now**  
**BOOTCAMP**  
 Wednesdays  
 3 pm- 4 pm  
 Penn Green Park,  
 Northfleet, Gravesend  
 DA11 8FH  
**FREE FOR ALL TO ENJOY**  
 Book via the GCLL App,  
 online at gcll.co.uk or  
 just turn up.  
 Running weekly from 28th April- 26th September 2025  
**FREE GROUP EXERCISE**  
**FREE GROUP EXERCISE**  
**FREE GROUP EXERCISE**

Get together  
Get active

Gravesham Borough Council  
 Ebbsfleet Garden City  
 GCLL  
 Swanscombe

- **Park Tennis**, every Sunday 10-11am at Castle Hill tennis courts starting 11<sup>th</sup> May – open to people of all ages and abilities, children need to be supervised by an adult.

- **Park Fitness**, boot camp sessions open to all abilities aged 16+, every Wednesday 3-4pm at Penn Green Park, Springhead, starting next Weds 30<sup>th</sup> May.



**Park Fitness**  
**Active Now** 16+  
**FREE FOR ALL TO ENJOY**  
 Running weekly from 28th April- 26th September

| CLASS          | DAY       | TIME           | LOCATION                |
|----------------|-----------|----------------|-------------------------|
| Yoga           | Wednesday | 10- 11 am      | St Gregory's Open Space |
| Bootcamp       | Wednesday | 3-4 pm         | Penn Green Park da118fh |
| Stretch & Tone | Thursday  | 9.45- 10.45 am | Gravesend Promenade     |
| Tai Chi        | Friday    | 11- 12 pm      | Woodlands Park          |

EXPLOREKENT.ORG  
 Gravesham Borough Council  
 active  
 Ebbsfleet Garden City